

yesyesyesClock Talk 32CTALK32FALSEThis file _ Real Solutions
04/04/95nono&AboutE&xitC&opy&Printnoyesyes16/09/96

Table of Contents

[Clock Talk 32](#)
[INTRODUCTION](#)
['F1' SENSITIVE HELP](#)
[Main Speed Bar](#)
[Option's Speed Button](#)
[Alarm Speed Button](#)
[Timer Speed Button](#)
[About Box](#)
[Main Help](#)
[Exit Program](#)
[Program Options](#)
[Voice / Wav Options](#)
[Play Voice](#)
[Voice Intervals](#)
[Play Wav File](#)
[Before / After Voice](#)
[Display Options](#)
[Changing Fonts](#)
[Changing Display](#)
[Outside Border](#)
[Inside Border](#)
[Outside width](#)
[Inside width](#)
[Sample Clock Face](#)
[Open Wav file dialog box](#)
[Changing display Colors](#)
[Font Color Button](#)
[Background Color Button](#)
[Color Dialog Box](#)
[Choosing basic colors](#)
[Choosing Custom Colors](#)
[Creating Custom Colors](#)
[Program Control Options](#)
[Stay on Top](#)
[Auto Start](#)
[Show Hints](#)
[Title Bar Resources](#)
[Title Bar Clock](#)
[Parent Control - All Windows](#)
[Parent Control - Parent only](#)
[Setting and using Alarms](#)
[Types of Alarms](#)
[Using Start and Stop Times](#)
[Message Box Alarm](#)
[New Button](#)
[Active check box](#)
[Run Minimized](#)
[Message Edit box](#)
[Browse button](#)
[Save Button](#)
[Assigning Sounds to Alarms](#)
[Scheduling alarms for Dates and Days](#)
[Scheduling a Once Alarm](#)
[Program Alarm](#)
[Replacing Windows Program Manager's Startup Group](#)
[Scheduling a 'Rekurs' Alarm](#)
[Delete button](#)
[Alarm List Box](#)
[Scheduling an 'Every' Alarm](#)
[Scheduling a Daily Alarm](#)
[Wav File Alarms](#)
[Clock Talk 32 Command Alarm](#)
[Example Program Commands](#)
[Registering Clock Talk 32](#)
[Disclaimer](#)
[Program Registration](#)

[CompuServe Registration](#)
[Invoice](#)
[send disk info](#)
[mailing overseas](#)
[Contacting Real Solutions](#)
[Timers](#)
[Up Timer](#)
[Monetary Timer](#)
[Monetary edit box](#)
[Use dollar button](#)
[Start / Pause button](#)
[Timer Exit button](#)
[Timer Help button](#)
[Timer description edit box](#)
[Down Timer](#)
[Timer start time edit box](#)
[Timer sound button](#)
[Microsoft's speaker driver](#)
[About Shareware](#)
[CD Player Alarms](#)
[CD Alarm command](#)
[CD Player](#)
[CD Player button](#)
[CD Player Modes](#)
[Play List Dialog Box](#)
[Voice on Demand Hot Key](#)
[Register through email](#)
[Internet WWW Page registration](#)
[Start Clock Talk with Windows](#)
[Using the Wav File Recorder](#)
[Scheduling a Monthly Alarm](#)
[Auto Delete checkbox](#)
[Auto Start checkbox](#)
[Avalaunch Alarm](#)
[What is Avalaunch](#)
[Avalaunch Availability](#)
[Clear Button \(wav files\)](#)
[Browse / Record button](#)
[Windows 95 Right Click Menu & Taskbar Icon](#)
[Hiding / Restoring Clock Talk](#)

Help file produced by **HELLLP!** v2.5 , a product of Guy Software, on 9/16/96 for Robert Griffin.

The above table of contents will be automatically completed and will also provide an excellent cross-reference for context strings and topic titles. You may leave it as your main table of contents for your help file, or you may create your own and cause it to be displayed instead by using the I button on the toolbar. This page will not be displayed as a topic. It is given a context string of `__` and a HelpContextID property of 32517, but these are not presented for jump selection.

HINT: If you do not wish some of your topics to appear in the table of contents as displayed to your users (you may want them ONLY as PopUps), move the lines with their titles and contexts to below this point. If you do this remember to move the whole line, not part. As an alternative, you may wish to set up your own table of contents, see Help under The Structure of a Help File.

Do not delete any codes in the area above the Table of Contents title, they are used internally by HELLLP!

Clock Talk 32 Help

Table of Contents

- **Introduction**
- **About Shareware**
- **F1 Sensitive help**
- **Clock Talk 32's speed bar**
- **Windows 95 Pop-up Menu & Taskbar Icon**
- **Hiding / Restoring Clock Talk**
- **Changing Program Options**
- **Setting and using Alarms**
- **Replacing Windows Program Manager's Startup with *Clock Talk 32***
- **CD Player**
- **Using Timers**
- **Registering *Clock Talk 32***
- **Contacting Real Solutions**

Introduction

Clock Talk was originally written for my own business. I wanted to have a program that would announce the time to me while I was busy doing other things, either on the computer or in the other room. I had a sound card, so I figured there had to be a program out there that would be just what I was looking for.

I found a few that were pretty good, but not exactly what I wanted. Other than some features they were missing, they seemed to take **a lot of my system resources** to run. System resources are not something that I take lightly. So **Clock Talk** was born.

Then came Windows 95. Although Clock Talk worked perfectly within the environment, I had at least one email message a day asking about a Windows 95 version. Well here is the next generation of Clock Talk... **Clock Talk 32!**

Clock Talk 32 is a Microsoft Windows program whose purpose is to announce the time of day along with many other features. It uses digitized human speech reproduced through a sound card or by using Microsoft's Speaker Driver for 286 - 486 computers. The program will function in all Windows modes: Real, Standard, or Enhanced.

After programming **Clock Talk 32** to speak, I decided to give it life, adding alarms and timer capabilities. Now not only will **Clock Talk 32** announce the time for you, but if you use the other features, it will actually automate your computer!

I have tried to make **Clock Talk 32** as easy to use as it is enjoyable to use. Please take a look at the alarms section of the help file for more information on automating your system.

Windows 95 Pop-up Menu & Taskbar Icon

Clock Talk 32 has a built in **Pop-up Menu**. To access this menu, click the right button of the mouse while holding the mouse pointer over the Clock face. This convenient little menu is helpful if the speed bar is hidden from view (for more information on the speed bar, see [Main Speed Bar](#)). The selections are the same as the speed bar with one exceptions, HIDE / RESTORE. This will hide the program all together (or restore it) leaving only the icon in the Windows 95 Taskbar.

The icon in the task bar can also be clicked. Clicking the icon with the left mouse button will restore Clock Talk back to the screen (if it was hidden). Clicking the icon with the right mouse button will bring up the **Pop-up Menu**.

Hiding / Restoring Clock Talk

The program can be hidden altogether leaving only the icon in the Taskbar system tray. To hide the program either minimize the clock face or choose HIDE from the Pop-up menu.

Once hidden, you can restore the program by either clicking the icon in the Taskbar system tray with the left mouse button, or choosing RESTORE from the Pop-up menu.

'F1' Sensitive help

Throughout the program, if you need help about a particular button or control, just hit **F1**. This will take you directly to the place in this help file for help on that particular subject. This is true anywhere you might be in **Clock Talk 32**.

If you need general help, select the help button '?'.

Main Speed Bar



[Click on one of the Speed Buttons above for information on that button.](#)

Speed buttons “transfer” you to other parts of the program. Using the mouse, click on a speed button to jump to special features of ***Clock Talk 32***. If you want to hide the speed bar, just click on the Clock Face itself!



Options Speed button

Selecting this button will take you directly to the Program Options Dialog box. From there you may change the way **Clock Talk 32** announces the time, change the clock display, and set special Program options and features. This actually lets you customize **Clock Talk 32** to your own personal taste.



CD Player Speed button

Selecting this button will open up the CD Player where you can play music CD's. You may also set up special CD Alarms which will also open the CD Player. Either way, before opening the CD player, make sure it is ready and currently has a music CD inserted. Otherwise you will get an error message.



Alarm Speed button

Selecting this button will take you directly to the Alarm Setup Dialog box. From here you can set up many different types of alarms for any time or day you select. You can have up to 50 different alarms.



Timer Speed button

Selecting this button will bring up a menu allowing you to select either a Up Timer or a Down Timer. Once selecting the Timer you wish to use, it will be shown on the screen where you can select options for setting that Timer. You can have as many timers running at the same time.



***Clock Talk 32* About Box**

This will bring up a scrollable about box giving you information about ***Clock Talk 32***. If you are an unregistered user of ***Clock Talk 32***, you may also go to the Registration screen, or form from the About Box. Once you have registered ***Clock Talk 32***, you will be given a Registration number which you will be entering in here to complete your registration.



Main Help (Table of Contents)

This will bring up the **Clock Talk 32** Help file Table of Contents. *Help is also available by hitting the F1 key anywhere within the program.*



Program Exit

By selecting this button, you will exit ***Clock Talk 32***. Exiting ***Clock Talk 32*** will also close any current Timers that you have running.

Program Options

To change the many options of ***Clock Talk 32***, select the Options Speed Button from the Clock display. You will be presented with the Preference Dialog Box. It is divided into 3 pages which you can tab between while changing options. Choose below for help with individual pages.

- Voice / Wav
- Display
- Control

Voice / Wav Options

The Voice / Wav page of the Options Dialog box lets you change the way **Clock Talk 32** handles the announcement of time. There are a number of different options that will let you customize **Clock Talk 32s** voice to suit your needs.

Voice Options

- Play Voice
- 1, 5, 10, 15, 30 & 60 Minutes

Voice On Demand

- 'Voice on Demand' Hot Key

Wav file options

- Play Wav File
- Browse / Record
- Before / After Voice

Play Voice

When checked, **Clock Talk 32** will announce the time at the selected interval. If this option is not checked, there will not be any announcement, no matter what interval is currently selected.

Voice Intervals

Clock Talk 32 will announce the time at the interval you select, either 1, 5, 10, 15, 30 or 60 minute intervals. No matter which interval is currently selected, to have the time announced, you must have the Play Voice option checked. The same intervals are used by the Play Wav File option.

'Voice on Demand' Hot Key

This allows you to select a hot 'key combination' to be used with the 'Voice on Demand'. Default value is **CTRL-SPACE BAR**. When this option is enabled and you press the key combination assigned, Clock Talk 32 will announce the time to you immediately no matter what Windows program you are currently in.

Play Wav File

If you would like **Clock Talk 32** to play a Wav file at the interval selected, check the Play Wav file. You have the option also of having the Wav file played either before or after the voice. If Play Voice is not selected, only the Wav file will be played.

Open Wav file dialog box

This dialog box lets you choose a Wav File. Choose 1st the directory that the wav file is in, and it will display all the wav files in that directory. Double click the wav file to choose it, or highlight the wav file and click OK to choose it.

Before / After Voice radio buttons

One of these selections must be checked. If you want a Wav File to be played at the interval selected, you have the choice of playing it either before or after the voice announcement. If the Play Voice option is not checked, the selection is ignored.

Display Options

The Display Options page of the Options dialog box allows you to change the way **Clock Talk 32** displays the clock face on your screen. You can customize the *look* any way you want.

- **Fonts**
- **Display**
- **Colors**

Changing Fonts

You can change both the Name and the Style of the Font. Choose from the list box. It will show the available True Type fonts available for Windows. When you select a font, or change the style of the font, it will automatically change the appearance of the Sample Clock Face.

Display

The Clock face has some unique properties that will change its appearance on your screen.

- **Outside Border**
 - **Outside width**
 - **Inside Border**
 - **Inside width**

Outside Border

You can change the outside border of the Clock Face. The available options are:

Raised - Will give the outside border the appearance that it is raised.

Lowered - Will give the outside border the appearance that it is lowered.

None - Will not show any outside border.

The changes you make will be reflected in the [Sample clock face](#).

Inside Border

You can change the inside border of the Clock Face. The available options are:

Raised - Will give the inside border the appearance that it is raised.

Lowered - Will give the inside border the appearance that it is lowered.

None - Will not show any inside border.

The changes you make will be reflected in the [Sample clock face](#).

Outside Width

You can change the width of the outside border by increasing or decreasing the value in the next to the Outside Border drop down list. The changes you make will be reflected in the Sample clock face.

Inside Width

You can change the width of the inside border by increasing or decreasing the value in the next to the Inside Border drop down list. The changes you make will be reflected in the Sample clock face.

Sample Clock Face

This will give you an idea what the actual clock face will look like as you make changes on the Display page of the Options dialog box.

Changing display colors

Clock Talk 32 gives you the option of changing the Font and Background colors of the clock display. To change the colors, choose the Display page of the Options dialog box. Once you select either the Font Color Button or the Background Color Button, **Clock Talk 32** will display the Color Dialog box where you can select from the many Basic Colors or create your own Custom Colors.

Font Color Button

This button allows you to change the color of the Font on the Clock Display. Once you select the Font Color Button, **Clock Talk 32** will display the Color Dialog box where you can select from the many Basic Colors or create your own Custom Colors.

Background Color Button

This button allows you to change the color of the Background on the Clock Display. Once you select the Background Color Button, **Clock Talk 32** will display the Color Dialog box where you can select from the many basic Colors or create your own Custom Colors.

Color Dialog Box

The Color Dialog box lets you choose from either the basic list of Colors, or by choosing Custom Colors, you can customize the color you want.

- **Choosing Basic Colors**
 - **Choosing Custom Colors**
 - **Creating Custom Colors**

Choosing Basic Colors

To choose a basic color, just point and click the color you want and choose OK.

Choosing Custom Colors

Once you have Created Custom Colors, you can choose from the list of saved Custom Colors. ***Clock Talk 32*** will automatically save up to 20 of your own personal custom colors.

Creating Custom Colors

To create a custom color, choose the define custom color button. This will open the Color Dialog box wider, allowing you then to customize a color.

1st, choose an open custom color box to store your color when you are finished. If you select one that already has a color assigned to it, and you continue, you will replace that color.

Point the mouse anywhere within the Rainbow color box. This will create a spectrum of colors to the right of the Rainbow color box. Again, using the mouse, slide the triangle marker (on the right hand side of the spectrum box) to the color that you want. This will update the Color/Solid color box so you may see your color in a little more detail. Once you find the color that you desire, choose Add to Custom Colors, and your color will automatically be saved to the custom color box you selected.

Clock Talk 32 lets you define up to 20 custom colors and will automatically save them when you select OK.

When you want to use one of the Custom colors that you have defined, just select it from the list of custom colors and choose OK.

Note: *Font colors have to be a solid color. Most of the custom colors that you create will not be solid. Clock Talk 32 will try to come as close to the color you defined as possible, replacing it with a solid color.*

Program Control Options

Program control options are available on the 3rd page of the Options Dialog box. From here you can change the programs application controls.

Program Options

- Stay on Top
 - Auto Start
 - Show Hints
 - Start Clock Talk with Windows

Menu Bar Options

- Title Bar Resources
 - Title Bar Clock
- ### Parent Control
- All Windows
 - Parent only

Stay on Top

When this check box in the Options - Program Control is selected, it will keep **Clock Talk 32** on top of all other Windows on the screen, whether they are active or not. Use this option if you want to have the clock displayed all the time, no matter what program you are in.

Auto Start

Normally **Clock Talk 32** only starts programs or any alarms when the exact start time and day is reached. With this selection checked, any program whose start time and stop time fall within the time that **Clock Talk 32** is started will automatically be launched.

Example: If you have a program that is suppose to start at **8:00am** and run until **5pm**, normally if **Clock Talk 32** was started at **9am**, that program would not run, since it has already passed its starting time. With Auto Start checked, that same program would automatically be launched if **Clock Talk 32** was started at **9am**, since **9am** falls within the range of the start time and stop time of the program. Of course, the program wouldn't be started if it also did not fall on today's date!

Check this option if you have programs set up in the alarms that must be ran during specific times. This way, if **Clock Talk 32** is put into your [Program Manager's Start-Up window](#), it will automatically start any program that is suppose to be currently running.

This option is great in case of a Power failure, or to keep a lot of programs out of your startup group that you might not always want to run at startup.!

Show Hints

Normally **Clock Talk 32** shows a Hint on the screen next to your mouse pointer, if your mouse remains on a control for more than a minute. The Hint is just that, it is a hint about that control. Once you become familiar with **Clock Talk 32** and if you do not want to see those hints each time you pause over a control, **UN-check** this option. Otherwise, if checked, hints will stay on throughout the program.

Starting Clock Talk with Windows

If this option is checked, Clock Talk will automatically be started each time when Windows is launched.

Title Bar Resources

This option is not available in Clock Talk 32.

Title Bar Clock

If this option is checked, it will show the current time on the title bar of the active Window. It will show the same format as the Clock display itself (Seconds also if you have it selected).

All Windows

If this option is selected and you currently are displaying the time or system resources in the title bar, it will display in ALL Windows. This means not just the programs main window, but also other dialog boxes within each program.

Parent only

If this option is selected and you currently are displaying the time or system resources in the title bar, it will display in the PARENT Windows ONLY. Only the Main Program window of each window will display the time or resources. Choose this option if you run a lot of programs that use small dialog boxes, since the time and resources won't fit on them.

Setting and using Alarms

One of the most powerful features of **Clock Talk 32** is its alarm capabilities. Although they are called alarms, alarms to **Clock Talk 32** are really different types of events. Some of the alarms don't even make any sounds but indeed happen at user defined times.

Not only can alarms be set to start at a particular time, but some of the alarm types can even be stopped at particular times. You also can set up alarms to only be used on a certain dates, or days of the week. This gives you the power of a Calendar Scheduler, without the overhead. This section of the Help file will explain how to schedule and use the Alarms in **Clock Talk 32**.

- **Types of Alarms**
 - **Assigning Sounds to Alarms**
 - **Using the Start and Stop times**
 - **Scheduling alarms for Dates and Days**

 - **Adding New Alarms**
 - **Deleting Alarms**
 - **Saving Alarms**
 - **Using the Alarm List Box**

 - **Making an alarm Active / Inactive**
 - **Auto Delete**
 - **Auto Start**

Using the Start and Stop times.

Start Time: When setting a new alarm, you must give the alarm a Start Time. This tells **Clock Talk 32** when to launch the alarm. All alarms must have a start time along with a date to run (default for a new alarm is Today's date). When that time is reached, **Clock Talk 32** will automatically launch the alarm for you depending on the Type of alarm it is launching.

Stop Time: Not all types of alarms have a stop time. If available, the stop time tells **Clock Talk 32** when you want that alarm to be automatically CLOSED or STOPPED.

The only exception to this is if you are setting a alarm that will recurs every so many MINUTES or HOURS, (an EVERY date setting). In this case **Clock Talk 32** uses the Stop time to figure out when to stop this type of recurring alarm. See the EVERY date setting for more information.

Types of Alarms

Clock Talk 32 has 4 built in Alarm Types that you can use:

- ◆ **Message Box Alarm**
 - ◆ **Program Alarm**
 - ◆ **Wav File Alarm**
 - ◆ **CD Player Alarms**
 - ◆ ***Clock Talk 32* Command Alarm**
 - ◆ **Avalaunch Alarm**

CD Player Alarms

CD Player alarms will launch the CD Player on the time and day you specify and start playing the selected tracks, depending on the Mode of Play that is set. This will automate your music selections.

To schedule a CD Player alarm follow these steps:

- 1 Select the CD Player alarm tab.
- 2 Select the **NEW** button.
- 3 Select the Mode of Play for this alarm.
- 4 You can have a wav file assigned to be played at the start time and at the stop time. To select or record the wav file to be played at the start time, select the **'A'** button under the Browse / Record button. Select the **'B'** button to select or record a wav file to be played at the stop time. Once you have selected which wav file to record, choose the Browse / Record button. To clear a wav file, use the Clear Button. See Using the Wav File Recorder for more info on assigning wav files.
- 5 Select a starting time for the alarm. If you would like to stop playing at a certain time, enter a stopping time. See Starting and Stopping times for more info.
- 6 Select the date you want this alarm to be scheduled. Use the **Today** button to assign today's date, or the **Recurring** button to assign a recurring date. For more information on Recurring dates, see Recurring Dates / Days.
- 7 If you want this alarm to be active, check the Active Checkbox.
- 8 If you want this alarm to be automatically deleted, check the Auto Delete checkbox.
- 9 If you want this alarm to be started automatically, check the Auto Start checkbox.
- 10 Click the Save button to save the alarm.

NOTE: *You must have a CD in your CD-Player for this alarm to work correctly!*

CD Alarm commands

Playlist: This command will launch the CD Player and automatically start playing the current CD in the Playlist mode.

Shuffle: This command will launch the CD Player and automatically start playing the current CD in the Shuffle mode.

Loop: This command will launch the CD Player and automatically start playing the current CD in the Loop mode.

Message Box Alarm

Message Box alarms are alarms that pop up on the screen with a message at the time and date that you specified.

To schedule a Message Box alarm follow these steps:

- 1 Select the Message alarm tab.
- 2 Select the **NEW** button.
- 3 Your cursor is automatically positioned in the Message Text box. Type the text that you want to appear on the message alarm.
- 4 If you would like to assign a wav file to be played before the alarm is started, choose the Browse / Record button. To clear a wav file, use the Clear Button. See Using the Wav File Recorder for more info on assigning wav files.
- 5 Select a starting time for the alarm. See Starting and Stopping times for more info.
- 6 Select the date you want this alarm to be scheduled. Use the **Today button** to assign today's date, or the **Recurring button** to assign a recurring date. For more information on Recurring dates, see Recurring Dates / Days.
- 7 If you want this alarm to be active, check the Active Checkbox.
- 8 If you want this alarm to be automatically deleted, check the Auto Delete checkbox.
- 9 If you want this alarm to be started automatically, check the Auto Start checkbox.
- 10 Click the Save button to save the alarm.

Program Alarm

The Program Alarm is a very powerful tool that can actually automate your entire system. It can even replace your Windows Program Manager's startup Group with a much more powerful start up procedure, that is time based. For more on this, see [Replacing Windows Program Managers Startup with **Clock Talk 32**](#).

A Program alarm is an alarm that will LAUNCH a program for you at the specified start time, and it will CLOSE the same program at the specified stop time. You do not have to specify a CLOSE time if you do not want **Clock Talk 32** to close the program.

To schedule a Program Alarm follow these steps:

- 1 Select the Program alarm tab.
- 2 Select the **NEW** button.
- 3 Enter the program file name, with it's complete path in the program path edit box next to the browse button. You can use the [Browse button](#) to help you find the program file you want to launch. If you want the program to be launched in its minimized state, check the [run minimized button](#).
- 4 You can have a wav file assigned to be played at the start time and at the stop time. To select or record the wav file to be played at the start time, select the '**A**' button under the [Browse / Record button](#). Select the '**B**' button to select or record a wav file to be played at the stop time. Once you have selected which wav file to record, choose the Browse / Record button. To clear a wav file, use the [Clear Button](#). See [Using the Wav File Recorder](#) for more info on assigning wav files.
- 5 Select a starting time for the alarm. If you would like to stop or close the program at a certain time, enter a stopping time. See [Starting and Stopping times](#) for more info.
- 6 Select the date you want this alarm to be scheduled. Use the **Today button** to assign today's date, or the **Recurring button** to assign a recurring date. For more information on Recurring dates, see [Recurring Dates / Days](#).
- 7 If you want this alarm to be active, check the [Active Checkbox](#).
- 8 If you want this alarm to be automatically deleted, check the [Auto Delete checkbox](#).
- 9 If you want this alarm to be started automatically, check the [Auto Start checkbox](#).
- 10 Click the [Save button](#) to save the alarm.

Wav File Alarms

A Wav File alarm will do nothing more than play the wav file at the given time and day you setup. It will not display any message box, or start any program.

To schedule a Wav Alarm follow these steps:

- 1 Select the Program alarm tab.
- 2 Select the **NEW** button.
- 3 Enter the wav file name, with it's complete path in the Wav File path edit box next to the browse / record button. You can use the Browse / Record button to choose or record the wav file. To clear a wav file, use the Clear Button. For more information on Recording wav files see Using the Wav File Recorder.
- 4 Select a starting time for the alarm.
- 5 Select the date you want this alarm to be scheduled. Use the **Today button** to assign today's date, or the **Recurring button** to assign a recurring date. For more information on Recurring dates, see Recurring Dates / Days.
- 6 If you want this alarm to be active, check the Active Checkbox.
- 7 If you want this alarm to be automatically deleted, check the Auto Delete checkbox.
- 8 If you want this alarm to be started automatically, check the Auto Start checkbox.
- 9 Click the Save button to save the alarm.

Clock Talk 32 Command Alarm

You can actually control the Program Options from an alarm. This comes in handy if you only want **Clock Talk 32** to announce the time between certain hours.

To schedule a **Clock Talk 32** Command Alarm follow these steps:

- 1 Select the Command alarm tab.
- 2 Select the **NEW** button.
- 3 Enter the commands you want to implement for this alarm from the 4 pull down list boxes. You do not need to use all 4 command list boxes. Just change the ones you want for this alarm. For examples, see [Program Command examples](#).
- 4 If you would like to assign a wav file to be played before the alarm is started, choose the [Browse / Record button](#). To clear a wav file, use the [Clear Button](#). See [Using the Wav File Recorder](#) for more info on assigning wav files.
- 5 Select a starting time for the alarm.
- 6 Select the date you want this alarm to be scheduled. Use the **Today button** to assign today's date, or the **Recurring button** to assign a recurring date. For more information on Recurring dates, see [Recurring Dates / Days](#).
- 7 If you want this alarm to be active, check the [Active Checkbox](#).
- 8 If you want this alarm to be automatically deleted, check the [Auto Delete checkbox](#).
- 9 If you want this alarm to be started automatically, check the [Auto Start checkbox](#).
- 10 Click the [Save button](#) to save the alarm.

Avalaunch Alarm

To use an Avalaunch alarm, you must also have **Avalaunch**, a separate program available from Real Solutions Software. An Avalaunch alarm will Launch and Close a program page in Avalaunch. For more information on Avalaunch, see [What is Avalaunch](#).

To schedule an Avalaunch alarm, follow these steps:

- 1 Select the Avalaunch alarm tab.
- 2 Select the **NEW** button.
- 3 If this is the 1st time you have scheduled an Avalaunch alarm, you will need to click on the Program Path and select the path where the Avalaunch program file is located (ALAUNCH.EXE). Then select the Avalaunch page you would like to have Launched.
- 4 You can have a wav file assigned to be played at the start time and at the stop time. To select or record the wav file to be played at the start time, select the **'A'** button under the [Browse / Record button](#). Select the **'B'** button to select or record a wav file to be played at the stop time. Once you have selected which wav file to record, choose the Browse / Record button. To clear a wav file, use the [Clear Button](#). See [Using the Wav File Recorder](#) for more info on assigning wav files.
- 5 Select a starting time for the alarm. If you would like to close the programs in the Avalaunch page at a certain time, enter a stopping time. See [Starting and Stopping times](#) for more info.
- 6 Select the date you want this alarm to be scheduled. Use the **Today button** to assign today's date, or the **Recurring button** to assign a recurring date. For more information on Recurring dates, see [Recurring Dates / Days](#).
- 7 If you want this alarm to be active, check the [Active Checkbox](#).
- 8 If you want this alarm to be automatically deleted, check the [Auto Delete checkbox](#).
- 9 If you want this alarm to be started automatically, check the [Auto Start checkbox](#).
- 10 Click the [Save button](#) to save the alarm.

What is Avalaunch

Avalaunch is a separate program available as shareware from Real Solutions Software.

Avalaunch is not just another program launcher. It will also close programs that it has launched. More than that, It will launch a number of programs at once with just a push of a button and then CLOSE ALL of the same programs with just a push of a button. It lets you group the programs together that you commonly use together. For instance, if you are going to do some desktop publishing, group your desktop publishing programs together on a program page named desktop. With the push of a button, *Avalaunch* will launch all of your desktop publishing programs (CorelDRAW®, Clipboard viewer®, Graphics Workshop® and character map) instead of having to launch 1 at a time. Then when you are done, just press the Close button and all of the programs will then close.

If you have used Internet, you can really understand the power of *Avalaunch*. Most of the time when you are connected, you might have 5 or 6 different program running. You'll have your Web browser, FTP program, Telnet program and email program almost always running. Now with *Avalaunch* you can just press one button to open all of your Internet programs, and when you log off of Internet, just press the Close button and all of the programs will be closed.

Clock Talk allows you to use the power of *Avalaunch* as a Clock Talk alarm. You don't even have to have *Avalaunch* running to use it. Clock Talk will find the program and the page you want to launch or close, and do it for you at the time and date you specify.

If you don't have *Avalaunch* already, and would like to take a look at the program, [CLICK HERE](#) for a location nearest you. For more information on using *Avalaunch* with Clock Talk, see [Clock Talk alarms](#).

Avalaunch Availability

Avalaunch is shareware. You may download it and try the software before you buy.

For the most recent version of Avalaunch, you can download it from our WWW site on Internet:
<http://www.realsol.com>.

You can also get it on CompuServe: GO WINSHARE

or

On America Online: Search files for AVALAUNCH.

If you like the software, registration cost is only \$12.00 (US). You will have plenty of time to test the software to see if it will fit your needs.

Program Command Examples

Play Voice	Interval	Wav file	When	Start Time
On	1 min	On	Before	10:45am

Actions: At 10:45 am, the voice option will be turned on to play voice time announcements every minute, playing the selected wav file before the voice.

Play Voice	Interval	Wav file	When	Start Time
	1 min		After	8:00am

Actions: At 8:00 am, the Interval option will be changed to play the voice time announcements every minute, and wav files after the voice option.

Play Voice	Interval	Wav file	When	Start Time
Off		Off		11:00pm

Actions: This will shut down all the sound to *Clock Talk 32* at 11:00pm.

Clear Button (wav files)

The Clear button will clear the wav file information. If the wav file was a *temporary wav file*, the wav file will be deleted. For more information on temporary wav files, see [Using the Wav File Recorder](#).

New Button

The new button clears the Alarm form and sets it up for a new alarm. Use this button when you want to add a new alarm. The Active check box will be automatically checked and also will automatically default to a *ONCE* alarm date putting in Today's date in the date field.

Active check box

When this control is checked, the alarm is activated. When activated, ***Clock Talk 32*** will start the alarm at the specified time and date. When it is unchecked, this alarm will not be started even if the time and date is reached.

Auto Delete checkbox

When checked, the alarm will automatically be deleted when the alarm has completed. This will only be available if the alarm is only scheduled to be ran one time, or a Once alarm. If there is a temporary wav file assigned to this alarm, the wav file will automatically be deleted also. For more information on temporary wav files, see Using the Wav File Recorder.

Auto Start checkbox

When checked, this alarm will automatically start when **Clock Talk 32** is started. If the alarm was scheduled for earlier that day, it will be auto started. This keeps you from missing scheduled alarms that were suppose to occur when **Clock Talk 32** was not running.

When adding a new alarm, **Auto Start** is checked by default. You might not always want this checked. For instance, if you have a Program alarm that is scheduled to launch at 6am each day, you might not want it to be automatically started each time Clock Talk.

Note: In order to have the Auto Start work, you must also specify that you want to use the [Auto Start feature](#) of Clock Talk. This is an option that can be changed in the **Clock Talk 32** options. For more information of **Clock Talk 32**'s options, see [Program Options](#).

Run Minimized check box

This check box is only used with Program Alarms. When checked, it will start the program in a minimized state. When unchecked, it will start the program normally.

Message Edit box

This is the edit box next to the Browse Button in the Alarm setup. Depending on the type of alarm, this edit box will hold program names, wav file names, program commands or messages. To determine the correct information to use, see type of alarms.

Browse button

This button will open up the Open File dialog box. From this dialog box, you can select the program file name or wav file name you wish to have in the Message Edit box. This will help you find the correct files, and keep you from accidentally mistyping the paths and file names.

Save button

The Save button will save the alarm, and add it to the Alarm List Box if it was a new alarm.

Delete button

The delete button will delete the current alarm. The current alarm is the alarm that is either currently selected in the Alarm List Box or that is currently being displayed on the Alarm Form. Once the alarm is deleted, there is no way to Undelete it. It would have to be reentered.

Alarm List Box

This is the list box that is located at the bottom of the Alarm Setup dialog box. It shows all the current alarms that you have created, active or not.

To scroll through the list, you can use either the scroll bar, or when an item in the list is selected, you can use your arrow keys. As you scroll through the list using your arrow keys, the alarm form is filled in with the selected alarm.

You may also just select an alarm from the list by choosing it with your mouse. The Alarm form will be filled in with that alarm.

Assigning Sounds to Alarms

You can assign a wav file to be played right before the alarm goes off. If the alarm that you are scheduling allows you to set a Stop Time, you can also assign a wav file to be played right before the alarm is stopped.

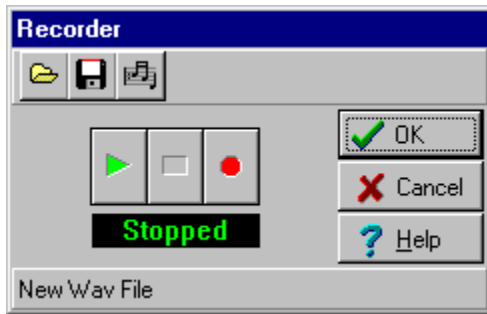
To assign a wav file to an alarm, choose the **Browse / Record button**. If the alarm that you are assigning a wav file to has a Stop time, you will need to 1st click either the 'A' or 'B' buttons to specify which wav file you want to record. The 'A' wav file is played right before the alarm starts, and the 'B' wav file is played right before the alarm is stopped.

Selecting the **Browse / Record button** will open the Wav File Recorder. You can record your own wav file or choose to open an existing wav file. For more information on using the Wav File Recorder, see [Using the Wav File Recorder](#).

Browse / Record button

Clicking on this button will bring up the Wav File Recorder which will let you record, open and save wav files.

Using the Wav File Recorder



The Wav File Recorder lets you record your own wav files, or you can open existing wav files and play them back. Once a wav file has been recorded or opened, Select the **OK** button to attach the wav file to the alarm or event.

Temporary wav files:

Clock Talk 32 lets you create temporary wav files. To create a temporary wav file, follow the instructions below to record your new wav file. **Do not save the wav file.** If the wav file is not saved, and if you press the **OK** button after recording the file, Clock Talk 32 will save this alarm as a temporary wav file and assign it a unique name. When an alarm is deleted, or the wav file is later changed, the temporary wav file is automatically deleted. This keeps you from having to later go in and manually delete all the old wav files that you no longer need. If you plan on recording a wav file for an alarm that will later be deleted, it is suggested that you use temporary wav files.

To Create a New wav file:

Click the **Record** button (has a red circle pictured on it). If you had already had a wav file open, click the **New** speed button at the top of the recorder. This will clear the recorder making it ready for a new wav file.

Start talking into your microphone. When you are done recording, click the **Stop** button (has a square pictured on it). To hear what you have just recorded, click on the **Play** button (has a triangle pictured on it). If you want to later use this file in other alarms or events, follow the instructions below to save the file. If you don't save the file before clicking the **OK** button, Clock Talk will create a temporary wav file (explained above).

To Save a wav file:

Click on the **Save** speed button at the top of the recorder (has a computer disk pictured on it). This will bring up the save dialog box. Give your new wav file a name, and the file will be saved. Saving a wav file not only lets you use the wav file this time, but it can later be used for other alarms and events.

To Open an existing wav file:

Click on the **Open** speed button (has a open file folder pictured on it). This will bring up the open dialog box allowing you to choose a wav file to open. Once open, it will be loaded into the recorder where you can listen or change the file.

Scheduling alarms for Dates and Days

Clock Talk 32 gives you a number of ways to schedule an alarm for Dates and days. With its flexibility, you can schedule just about every type of Recurring alarm that you can think of. To assign special Dates and Days, click the **Recurring** button.

The following is a list of the available Date and Day scheduling:

- **Once**
 - **Monthly**
 - **Recurs**
 - **Every**
 - **Daily**

Scheduling an *Once* Alarm

This type of alarm will only be started once, on the Time and the date specified. Once the alarm has ran, you can always reschedule it.

To set up an alarm to run once, follow these steps:

- 1 Set the Start time you would like to start the alarm. Enter a stop time if applicable. See [Start and Stop times](#) for more information.
- 2 Click on the **Recurring** button. When the Recurring dialog box comes up, click the **Once** radio button and enter the date in the Date Edit box. If you would like Today's date, you can manually enter it, or use the Today Button, to have today's date entered for you.
- 3 Choose Save to save the alarm when you are finished.

That's it. The alarm will go off at the scheduled time and day only once.

Scheduling a Monthly Alarm

A Monthly alarm will recur on a given date once a month and will continue until the [Active button](#) is unchecked or the alarm is [deleted](#).

To set up a monthly alarm, follow these steps:

- 1 Set the Start time you would like to start the alarm. Enter a stop time if applicable. See [Start and Stop times](#) for more information.
- 2 Click on the **Recurring** button. When the Recurring dialog box comes up, select the Monthly radio button.
- 3 Enter the date that you would like the alarm to be scheduled. Example: If you want the alarm to go off on the 1st of each month, enter a 1.
- 4 Choose **Save** to save the alarm when you are finished.

Scheduling a Recurs Alarm

A **Recurs** or Recurring alarm will recur at the time and day that you specify and will continue recurring until the Active button is unchecked or the alarm is deleted.

To set up an alarm to recur, follow these steps:

- 1 Set the Start time you would like to start the alarm. Enter a stop time if applicable. See Start and Stop times for more information.
- 2 Click on the **Recurring** button. When the Recurring dialog box comes up, click the Recurs radio button.
- 3 Enter the interval you want this alarm to recur. You have a choice of Every, 1st, 2nd, 3rd, 4th or Last.
- 4 Enter the day you want this alarm to recur.
- 5 Choose **Save** to save the alarm when you are finished.

Example: If you want an alarm to recur every 3rd Friday of the month, enter **3rd** as the interval and **Friday** for the day. The alarm will only start on the 3rd Friday of the month.

Note: When entering a Weekend or a Weekday recurring alarm, **Clock Talk 32** will only allow you to choose **every** as the interval.

Scheduling an *Every* Alarm

An *Every* alarm will recur a number of Minutes, or Hours on a certain day. Unlike the other type of Date and Day settings, the *Every* setting will not close an application or program at the Stop time specified. It uses the Start and Stop time as a range.

For example:

If you had the **Start time** set for **9 AM** and the **Stop time** set for **4 PM** and the *Every* set at every 1 hour on Friday, then ***Clock Talk 32*** would start the alarm **every hour** starting at **9 AM** until **4 PM** on all Fridays. The alarm would go off at **9, 10, 11, 12, 1, 2 & 3 PM**. ***Clock Talk 32*** would then not start this alarm again until the following Friday at **9 AM**.

You can not CLOSE applications started with an *Every* set alarm!

To set up an *Every* set alarm, follow these steps:

- 1 Set the Start time you would like to start the alarm. Enter the Stop time, or the end of the range that you want this alarm to run. Without a Stop time, ***Clock Talk 32*** will run the alarm until the end of the day.
- 2 Click on the **Recurring** button. When the Recurring dialog box comes up, click the *Every* radio button.
- 3 Enter the interval number and interval type into the 2 edit boxes.
- 4 Enter the day you want this alarm to start.
- 5 Choose Save to save the alarm when you are finished.

Scheduling a *Daily* Alarm

A ***daily*** alarm is just that, it will run daily. This alarm only pays attention to the Starting time and the Stopping time.

To set up an alarm to run ***daily***, follow these steps:

- 1 Set the Start time you would like to start the alarm. Enter a stop time if applicable. See [Start and Stop times](#) for more information.
- 2 Click on the **Recurring** button. When the Recurring dialog box comes up, click the ***Daily*** radio button.
- 3 Choose Save to save the alarm when you are finished.

That's it. The alarm will go off at the scheduled time every day until the [Active button](#) is unchecked or the alarm is [deleted](#).

Replacing Windows Program Manager's Startup Group

Using **Clock Talk 32**'s powerful Program Alarms you can actually automate your system much better than just using the Program Mgr.'s Startup Group alone. For example:

Lets say you have a FAX program that you like to run between the hours of 8:30 and 5:30 PM. If you used the Program Mgr.'s Startup to launch your program, it would be launched each and overtime you started windows, regardless of what time of day it was. By checking the *Start Clock Talk* having **Clock Talk 32** put into your Startup Group and adding your FAX program as a Program Alarm in the Alarm Setup of **Clock Talk 32**, you could have **Clock Talk 32** launch your FAX program at the given times. When you start windows, it would launch it every single time, only at the hours you specify.

Let's take it even further. If you have the Auto Start feature selected in the Program Control Options, and if **Clock Talk 32** is started between the hours that the FAX program was suppose to be running, then it would automatically LAUNCH it.

OK, one final step further. Lets say that a 12pm every day, you need to call CompuServe and check your mail. Normally you do this yourself, but you are out of the office. With **Clock Talk 32**, you can have the FAX program CLOSE at 11:59am (if you specified the stop time) and have your CompuServe program start at 12pm, automatically getting your mail. After it is complete, then set up another alarm to restart your fax program. Since you can't have 2 communication programs running and accessing the modem at the same time in Windows, **Clock Talk 32** gives you the perfect way to use 2 communication programs at one time, using the Program Alarms.

Since **Clock Talk 32** gives you such a wide variety of Dates and Days to schedule your alarms, the possibilities are really endless. You could have your mail checked automatically on BBS's and other services you belong to while you are away from the computer, and have everything ready for you when you get back. If your business depends on certain programs to be running (Voice Mail, FAX programs...) and the power goes out and you are away, **Clock Talk 32** will start everything back up for your automatically if it is suppose to be running.

If you are currently running programs in your Startup Group, try using the powerful alarm features of **Clock Talk 32** to replace them. You will have much more control.

Registering *Clock Talk 32*

Registration supplies the right to the continued use of the product after the 30 day free trial. It does not rescind the legal disclaimer of liability under which this product is used. It also entitles you to free minor updates. The current version is 1.2. Minor updates would include any 1.x version of ***Clock Talk 32*** (where 'x' designates the update version number).

Additionally ***Clock Talk 32*** will remind you that you need to register the program each time it is started. These reminders will continue until the program is registered. Once registered, these messages will no longer be displayed.

Pricing is as follows:

Program Registration

\$14.00 (US)

Register via CompuServe

Register through email

Internet WWW Page registration

Register via Mail

Program disk with registration

\$ 6.00 (US)(additional charge)

Additional Postage outside Canada / US

\$ 5.00 (US)(additional charge)

***Clock Talk 32* Registration is for ONE COMPUTER.** Make sure to include the serial number to the program on the invoice if you are mailing your payment.

If you register through CompuServe, please e-mail Real Solutions your serial number. We will then e-mail back your registration number.

NOTE: The registration number is only good on the computer you are currently evaluating ***Clock Talk 32*** on.

Internet WWW page registration

You can now register on-line on our World Wide Web page. To access our web page, you must have an Internet account. Most other on-line services offer Internet access. See the member services of your on-line service to see if they have a gateway for Internet. You must also have some sort of Web browser.

Our WWW page address is: **<http://www.realsol.com>**.

Once you are there you can fill out a registration form, and using your credit card, register right on-line!

Register through email

You may register through email using your Visa, Master Card, AMEX or Discover card. Copy the [registration form](#) to the clipboard (using the copy button in this help file) and paste it into your favorite email program. Fill out the registration form and address the email to Robert Griffin at Real Solutions (griffin@realsol.com). We process our own credit card orders and will then email you back your registration number. If you request a disk, we will also send you a hard copy of the registration letter along with the disk of your choice.

Disclaimer

The supplier and author bear no liability to the licensee or any other person or entity for any damage or loss, including special, incidental or consequential damages caused by this product directly or indirectly. The software is supplied "as is" without warranty of any kind, either expressed or implied. Warranties of merchantability or of fitness for any purpose are specifically disclaimed.

The registration cost includes mailing or emailing the registration number to you. This will unlock all of the program features and disable the registration notices. You may send a personal check or money order to Real Solutions by printing and filling out the Invoice. We also accept Visa, M/C, AMEX and the Discover card. Once payment is received, we will send you your personalized Registration number to the address or email address you specified on the invoice. The payment and registration may also be done entirely within CompuServe's Shareware Registration Database.

CompuServe Registration

Registration and Payment via CompuServe

CompuServe provides a convenient route for the registration of Shareware, and the special "Electronic Registration" of **Clock Talk 32** may be performed by that route. Note that the electronic registration price of **CLOCK TALK 32** is only dependent on your providing an electronic route for us to send you your registration code number. That price is available whether or not you use CompuServe to contact us.

IF REGISTERING THROUGH COMPUSERVE, YOU MUST ALSO EMAIL US YOUR PROGRAM SERIAL NUMBER SO WE CAN EMAIL BACK TO YOU YOUR REGISTRATION NUMBER. COMPUSERVE WILL NOT CONTACT US WITH THE SERIAL NUMBER. THIS MUST BE DONE TO COMPLETE THE REGISTRATION.

To access CompuServe's registration database, GO SWREG in CompuServe. **CLOCK TALK 32** has 2 versions available each with it's own Registration ID.

Registration ID 11100 in the CompuServe database is \$14.00(US). This includes sending out the registration number to you ONLY once registered. Once CompuServe informs us of your registration, we will transmit to your CompuServe ID an Email message containing your personal registration number.

Registration ID 11101 in the CompuServe database is \$20.00(US). This includes both the registration number along with the most current version of **Clock Talk 32** being mailed to you once payment is made. Make sure you specify what size disk to mail. We will still e-mail you the registration number if you send us e-mail requesting us to. If you would like us to also e-mail the registration number, please address the mail to [Real Solutions](#) and include your serial number.

The following instructions are provided by CompuServe on the use of the Shareware Registration Database.

Register Shareware+

INSTRUCTIONS TO REGISTER SHAREWARE

The Shareware Registration database contains descriptions of hundreds of Shareware programs designed for a variety of platforms and purposes. To register a program, you must first find its description in the Shareware Registration database. To begin, select "Register Shareware" from the previous menu. A list of search criteria will be displayed to you. You may search for your program's description by its TITLE, FILE NAME, AUTHOR'S COMPUSERVE ID, and AUTHOR'S NAME. You may also search for your description by its KEYWORDS (categories). For example, to find the description of a Macintosh utility, you might use the keyword: utility. (For information about registering by your program's REGISTRATION ID, see below.)

After you enter your search criteria, you are usually displayed a list of programs that meet the criteria in the database. Select the program that you wish to register from the list.

Sometimes after you enter search criteria, you are displayed a menu of choices. This occurs when your search yields a large number of "matches" in the database. The menu offers you the ability to NARROW your results further, to DISPLAY the list of "matches," or to BEGIN AGAIN. After you select your program from the list, you are displayed the program's description, with a prompt: "Would You Like to Register? (Y/N)."

Read the description carefully to verify that you wish to register the program. The description details the program, its capabilities, and the benefits of registration. Be sure to note the program's registration fee.

When you register any program, the registration fee is charged to your CompuServe account.

Enter "Y" at the prompt to register; enter "N" at the prompt to ensure that you do not register the program, and to return to the previous menu. When you enter "Y" to register, you will be prompted to enter your full name, company name (optional), your complete address, your phone number (optional) and the total number of copies of the program that you wish to register. When you finish entering this information, you can VIEW, CHANGE, SEND or CANCEL it.

Select VIEW to confirm that the information you entered is correct. Select CHANGE to edit any of the information you entered. Select SEND to complete your registration, receive a detail of your total charges, and to send the information to the author. Select CANCEL to cancel registration of the program. When authors submit their descriptions to the Shareware Registration database, their descriptions receive a REGISTRATION ID. If you know the REGISTRATION ID (for **CLOCK TALK 32**, the registration ID is **11100**, \$14 US, or **11101**, \$20 US, *see above for differences*) of the program description in the database, you may enter it under option #1 on the search criteria menu. You will then navigate directly to the program's description. This is the easiest and fastest method of registering a program.

If you have any questions or concerns about Shareware registration, send a message to the Shareware Administrator by selecting the "Provide Feedback" option at the main SWR menu.

Cash Invoice - Clock Talk 32, v1.2

Please complete and print out the Cash Invoice form and mail to Real Solutions along with a check or money order for the total purchase price. Also, please indicate as much as you can on our invoice. It will help use in future updates of **Clock Talk 32**.

Name: _____ Company: _____

Address : _____ Day Phone: _____

FAX: _____

—

City : _____ Email Address: _____

State: _____ Zip _____

***** IMPORTANT ***** ENTER SERIAL NUMBER: _____ - _____ - _____ - _____

Description	Cost	Quantity	Total
Registration Cost per computer	\$ 14.00 (US)	_____	\$ _____
Include most current version of on _____ 3½ _____ 5¼ disk	\$ 6.00 (US)	_____	\$ _____
Additional postage if mailing program disk outside the US/Canada	\$ 5.00 (US)	_____	\$ _____
Total Payment (check payment method below)			\$ _____

- Visa
- M/C
- AMEX
- Discover
- Check / Money Order

Credit Card Number _____ - _____ - _____ - _____ Expiration date ____/____

For our information, please complete the following information:

Where did you hear about **Clock Talk 32**? _____

What features do you enjoy using in **Clock Talk 32**? _____

Any suggestions for future versions? _____

*Thank you for registering **Clock Talk 32** and supporting the Shareware Concept!*

Real Solutions

PO Box 491523

Redding, CA 96049-1523

If you specify that you would like us to also send you the program disk along with the registration number, there is an additional charge. We will mail you out the most current version of ***Clock Talk 32*** to the address specified on the Invoice.

If you live outside the US or Canada, an addition shipping and handling charge must be added if we are sending you the program disk. *This charge only applies if you had specified that you wanted the program disk mailed along with the registration number.*

Contacting Real Solutions

You may contact Real Solutions through the US Postal service, CompuServe or Internet.

Real Solutions

PO Box 491523

Redding, CA 96049-1523

CompuServe: [74212,1506](tel:742121506)

Internet mail: helpdesk@realsol.com

Internet World Wide Web: www.realsol.com

Timers

A Clock program would not be complete without some kind of timer or stopwatch capability. You can have an unlimited number of timers all running at the same time. ***Clock Talk 32*** gives you 2 convenient timers:

- ◆ Up Timer
- ◆ Down Timer

Up Timer

The Up Timer is a count up timer that will keep track of time for you in either the normal time format or you can easily convert it over to a Monetary Timer.

The controls on an Up Timer consist of a Monetary edit box, a speed bar with a Use Dollar button, Start / Pause button, Exit button and a help button and also a Description edit box.

Use the count up timer for keeping track of current jobs you are working on, watching and calculating ON-LINE charges with ON-LINE services, or anything you can think of using it for. You can have as many Timers running at the same time as you have memory for.

Note: The timers are automatically closed when you close ***Clock Talk 32***.

Monetary Timer

This is a timer that is incremented not by seconds, but by Dollars and cents. You can use this type of timer to keep track of Dollars per hour rather than just time. Keep track of Long distant phone calls, ON-LINE services or client billing. Anything that you do by the hour can be kept track of in **Clock Talk 32s** Monetary timer.

Monetary edit box

This edit box is located on the Count up Timer. It actually is a Combo box. A Combo box is a combination of an edit box and a list box. You may enter any dollar per hour amount into the edit box.

Clock Talk 32 will automatically remember the last 10 dollar amounts that you have used in the past, and you can choose them by selecting them from the pull down list box instead of having to enter them again each time.



Use dollar button

This button will toggle between the normal timer using minutes and seconds, to the monetary timer using the dollar amount in the Monetary edit box.



Start / Pause button

When this button is in the down position, it will start or resume the timer. When up, the timer is stopped or paused.



Exit button

This button will close or exit the current timer. It will not affect other timers that are currently running.



Help button

When clicking this button, it will bring up the help for the ***Clock Talk 32*** Timers.

Description edit box

The description edit box is located underneath the timer speed bar. Here you can enter a description of what you are currently timing. This comes in handy if you have more than one timer running on the screen at one time.

Down Timer

The Down timer is a count down timer. You can use this timer for keeping track of set times. To use this timer, just enter a starting time in the Start time edit box. Once you have the time set, click on the Start / Pause button to start the timer. When the time expires, an alarm will sound for 5 seconds, approx. every 60 seconds. **Clock Talk 32** uses your default assigned Windows sound. You may choose your own wav file if you would like a different sound for each Down Timer by selecting the Sound button. Also included on the Down Timer speed bar is an Exit button and a help button.

If you have more than one Timer running, it is a good idea to use the Description edit box to help you keep track of them.

Start Time edit box

You may enter any valid time up to 24 hours into the Start time edit box.



Sound button

The sound button lets you choose a wav file to be used when the Down Timer expires. It will bring up a **Wav File Recorder** where you can assign a wav file to the Timer.

Microsoft's speaker driver package for Windows 1.0 lets you play WAV sound files without a special audio board. This file is readily available on many BBS's or you may download it from CompuServe (Forum Name: **FIFTHG** Library: **Misc. PC files (16)**). On most BBS's and CompuServe the file is named **SPEAK.EXE**. It includes installation instructions and a license agreement. The file is just over 20K and definitely is worth it if you do not have a sound card.

About Shareware

Shareware is copyrighted software that is distributed by authors through bulletin boards, on-line services and disk vendors.

Shareware allows you to try the software for a reasonable limited period. If you decide not to continue using it, you throw it away and forget about it. You only pay for it if you continue to use it. Shareware is a distribution method, not a type of software. You benefit because you get to use the software to determine whether it meets your needs, before you pay for it.

The Shareware system and the continued availability of quality Shareware products depend on your willingness to register and pay for the Shareware you use. It's the registration fees you pay which allow authors to support and continue to develop their products. Please show your support for Shareware by registering those programs you actually use.

Even if the person who supplied you with the software tells you that registration is not necessary, be assured that if the copy of the program presents a screen reminding you to register, then the author has not been paid for that copy and registration is necessary.

CD Player

Clock Talk 32's CD Player lets you play music CD's without having to start a separate program to do so. This saves on system resources. You can launch the CD Player by clicking on the [CD Player speedbutton](#) or by setting up a [CD Player Alarm](#).

CD Player Controls



The buttons are as follows:

- Play:** Start playing, or resume the selected track or mode.
- Pause:** Pauses the current song.
- Stop:** Stop playing the CD and rewind to beginning.
- Next:** Moves to the next track on the CD.
- Previous:** Moves to the previous track on the CD.
- Eject:** Ejects the CD.

CD Player Buttons

Done: Closes the CD Player. If running in [Loop Mode](#) then the CD continues to play. If running in any other mode, the CD will continue playing on the current track and then stop.

Play list: This will open up the [Play list dialog box](#) where you can select certain tracks to be added to your personalized play list. You may also assign names to the CD and the individual tracks in the [Play list dialog box](#).

Mode: This selects the [Mode](#) that you want the CD to play.

Help: Brings up this help.

CD Player Modes

Loop: This will play the current CD from track #1 to the end and then repeat.

Single: This will only play the selected track once.

Shuffle: This will shuffle all the tracks, and play them randomly.

Play List: This will play your selected tracks that you assigned using the [Play list dialog box](#).

Play List Dialog Box

The Play list dialog box lets you:

- Assign a name to the current CD.
- Assign names to individual tracks.
- Assign your custom play list.

Name CD button: Click this button to assign a name to the current CD.

Name Track: Click this button to assign a name to the track with is highlighted in the Tracks list box.

Tracks: This is a list box that shows all the current tracks on the CD. If they haven't been assigned names yet, they will read **untitled**. You may select individual tracks by clicking them with the left mouse button. You may also select more than one track at a time by clicking the mouse left button while holding down the **shift key** on the keyboard. You can select a range of tracks by clicking the 1st track in the range you want selected and then clicking the last track you want selected while holding down the **Ctrl key** on the keyboard.

Play List: This is a list box that shows all the currently selected tracks in your play list. You can drag and drop tracks from the **Tracks** List Box by selecting the track you want with the left mouse button, and holding it down while moving the mouse pointer to the **Play List** list box and letting go of the mouse button. You may also assign tracks using either the **Add** or **Add All** buttons.

You may also select more than one track at a time by clicking the mouse left button while holding down the **shift key** on the keyboard. You can select a range of tracks by clicking the 1st track in the range you want selected and then clicking the last track you want selected while holding down the **Ctrl key** on the keyboard.

You may also reorganize the **Play list** by dragging and dropping. Select the track you want to move with the left mouse button, hold it down while moving the mouse to the spot in the list you want the track, and drop it to that location by letting go of the mouse button.

Add button: This will copy the currently selected track from the **Tracks** list box to the **Play list** list box.

Add all button: This will copy all highlighted tracks in the **Tracks** list box over to the **Play list** list box.

Delete button: This will delete the selected track from the **Play list** list box.

Delete all button: This will delete the selected tracks from the **Play list** list box.

OK button: This will accept all the changes you have made and close the Play list dialog box.

Help button: Brings up this help.

